

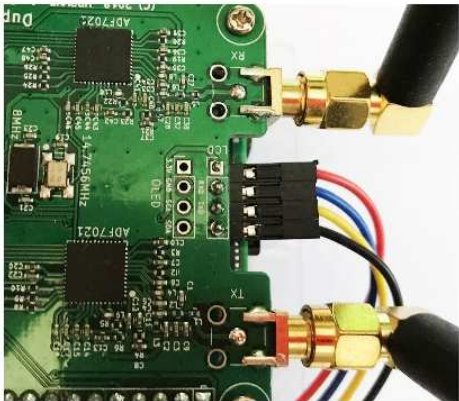
# Duplex\_HotSpot de BI7JTA

**Dans le menu Configuration Renseigner les parties 1-2-3-5-5-6-7**

**Dans le menu Configuration -> Expert Puis MMDVMHost, renseigner la partie 8 afin d'avoir un BER <1**

## AFFICHEUR NEXTION

- HotSpot +5V --> Nextion +5V Rouge
- HotSpot RXD --> Nextion TX Bleu
- HotSpot TXD --> Nextion RX Jaune
- HotSpot GND --> Nextion GND Noir



Nom d'hôte	Kernel	Plateforme	Charge CPU	Température CPU
pi-star	4.9.35-v7+	Pi 3 Model B (1GB) - Sony, UK	0.44 / 0.27 / 0.12	53.2°C / 127.8°F

### Contrôle logiciel

Paramètres	Valeur
Logiciel controleur:	<input type="radio"/> DStarRepeater <input checked="" type="radio"/> MMDVMHost (DV-Mega Minimum Firmware 3.07 Required)
Mode controleur:	<input type="radio"/> Simplex Node <input checked="" type="radio"/> Duplex Repeater <input type="radio"/> for Half Duplex on Hotspots

Appliquer les modifications

### Configuration de MMDVMHost

Paramètres	Valeur
Mode DMR:	<input checked="" type="radio"/> RF Hangtime: 20 Net Hangtime: 20
Mode D-Star:	<input type="radio"/> RF Hangtime: 20 Net Hangtime: 20
Mode YSF:	<input type="radio"/> RF Hangtime: 20 Net Hangtime: 20
Mode P25:	<input type="radio"/> RF Hangtime: 20 Net Hangtime: 20
Mode NXDN:	<input type="radio"/> RF Hangtime: 20 Net Hangtime: 20
YSP2DMR:	<input type="checkbox"/>
YSP2NXDN:	<input type="checkbox"/>
YSP2P25:	<input type="checkbox"/>
DMR2YSF:	<input type="checkbox"/> Uses 7 prefix on DMRGateway
DMR2NXDN:	<input type="checkbox"/> Uses 7 prefix on DMRGateway
POCSAG:	<input type="checkbox"/>
Afficheur MMDVM:	Nextion Port: Modem Nextion Layout: ON7LDS L3

Si pas d'écran, mettre: NONE Appliquer les modifications

### Configuration générale

Hostname:	pi-star	Do not add suffixes such as .local
Indicatif du Node:	FXXXX	<b>4</b> Votre Indicatif
d CCS7/DMR:	208XXXX	<b>4</b> Votre ID CCS7 - DMR
Fréquence radio RX:	434.600.000 MHz	<b>5</b> set UHF TX - RX >= 5MHZ to Get better performance
Fréquence radio TX:	439.600.000 MHz	<b>5</b> set VHF TX - RX >= 900MHzHZ to Get better performance
Latitude:	50.00	degrees (positive value for North, negative for South)
Longitude:	-3.00	degrees (positive value for East, negative for West)
Ville:	Ste Marie la Mer	
Pays:	FRANCE	
URL:	http://www.qrz.com/db/f8bsy	<input type="radio"/> Auto <input checked="" type="radio"/> Manual
Modèle Radio/Modem:	STM32-DVM / MMDVM_HS - Raspberry Pi Hat (GPIO)	<b>6</b>
Type de Node:	<input type="radio"/> Private <input checked="" type="radio"/> Public	
Fuseau horaire:	Europe/Paris	
Langage de la console:	french_fr	

Appliquer les modifications

### Configuration DMR

Master DMR:	BM_France_2082
Mode Couleur DMR:	1 <b>7</b>
DMR LC integre uniquement:	<input type="checkbox"/>
DMR DumpTAData:	<input checked="" type="checkbox"/>

Appliquer les modifications

Timeout	240
Duplex	1
RFModeHang	300
NetModeHang	300
Display	Nextion
Daemon	1

Appliquer les modifications

### Info

RXFrequency	434600000
TXFrequency	439600000
Power	1
Latitude	50.00
Longitude	-3.00
Height	0
Location	Ste Marie la Mer
Description	FRANCE
URL	http://www.qrz.com/db

Appliquer les modifications

### Log

DisplayLevel	0
FileLevel	2
FilePath	/var/log/pi-star
FileRoot	MMDVM

Appliquer les modifications

### DMR Id

Enable	0
Time	10

Appliquer les modifications

### DMR Id Lookup

File	/usr/local/etc/DMRIds.d
Time	24

Appliquer les modifications

### NXDN Id Lookup

File	/usr/local/etc/NXDN.csv
Time	24

Appliquer les modifications

### Modem

Port	/dev/ttyAMA0
TXInvert	1
RXInvert	0
PTTInvert	0
TXDelay	100
RXOffset	-300 <b>8</b>
TXOffset	-300
DMRDelay	0
RXLevel	50
TXLevel	50
RXDCOffset	0
TXDCOffset	0